
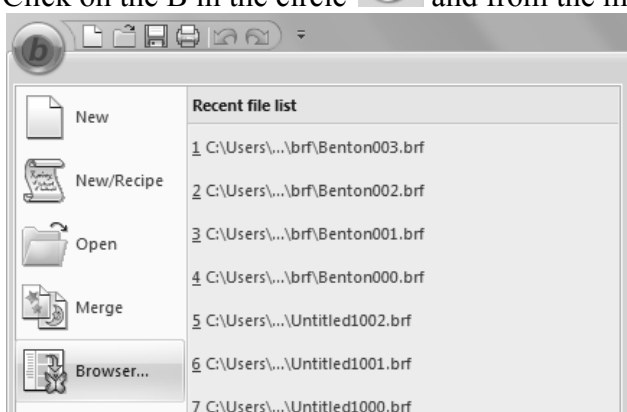


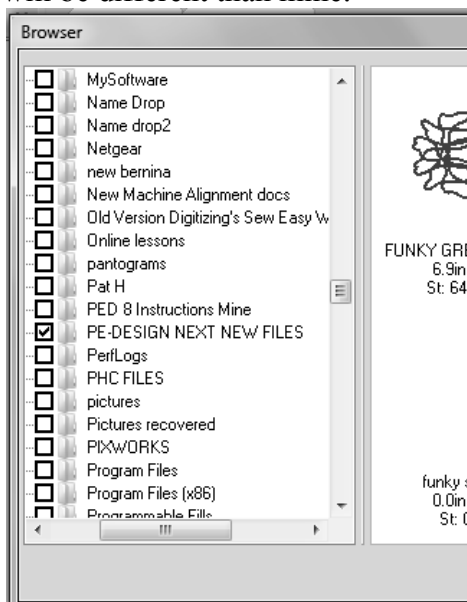
## Using the Browser Window

BES<sup>®</sup> Embroidery Lettering 2 comes with a Browser window that allows you to view design in folders and the information about them (stitch count, size, and number of colors) before Merging them into the design window. The browser window will also allow you to view designs inside of zipped files without unzipping first.

1. Open BES<sup>®</sup> Embroidery Lettering 2.
2. Click on the B in the circle  and from the menu that appears, choose Browser.



3. On the left side of the window, click inside the square in front of folder to place a checkmark inside the square. This allows you to view the designs inside the folder. You may select multiple folders to view if you wish. Note: the folders on your computer as well as the designs will be different than mine.

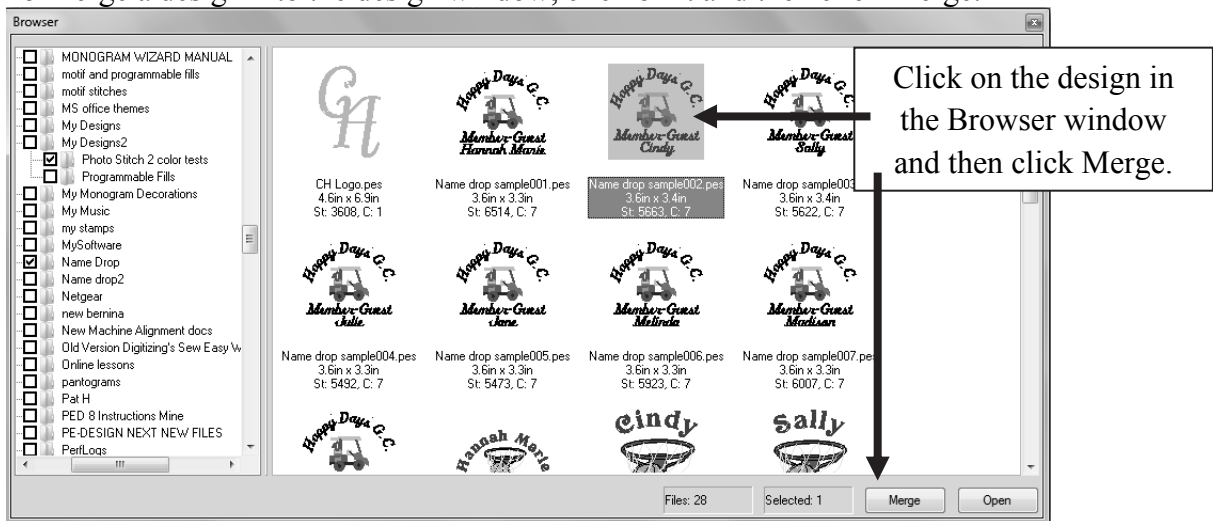


- The designs in the folder(s) will be visible. You will see the design name, size, stitch count and the number of colors beneath the design image.

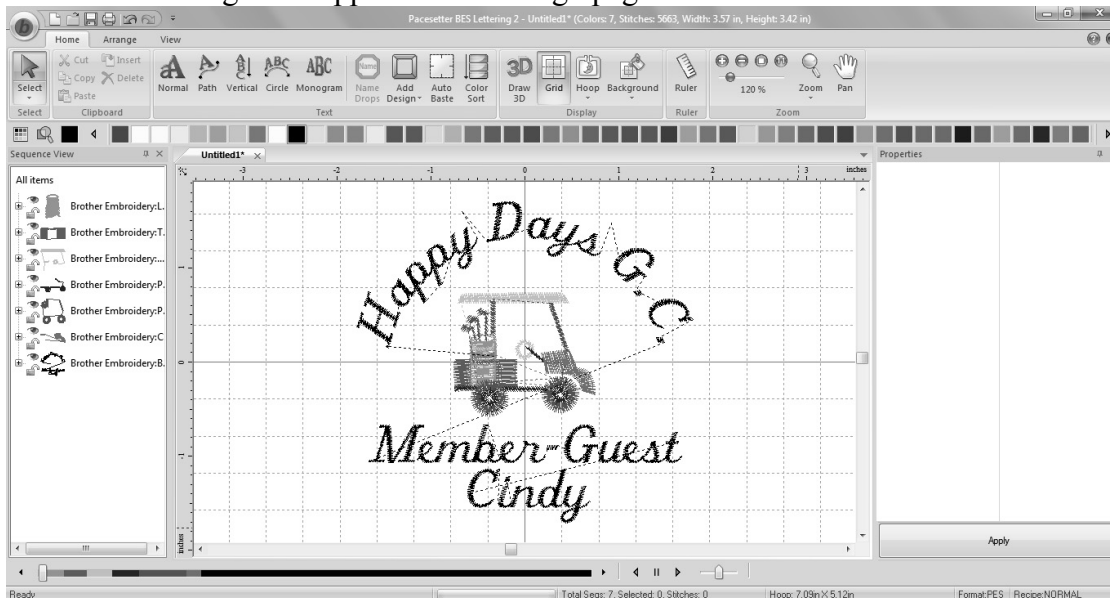


Name drop sample004.pes  
3.6in x 3.3in  
St: 5492, C: 7



- To Merge a design into the design window, click on it and then click Merge.

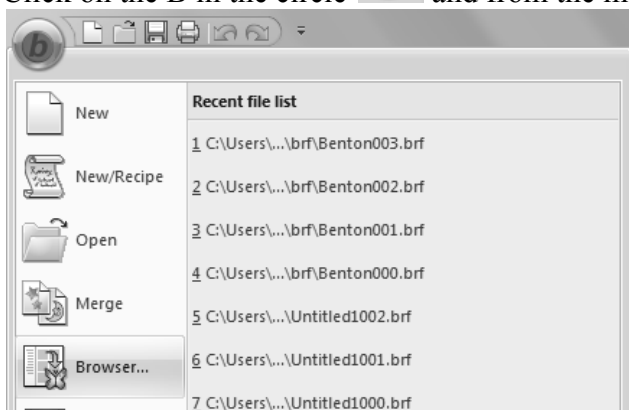


- The selected design will appear on the design page.

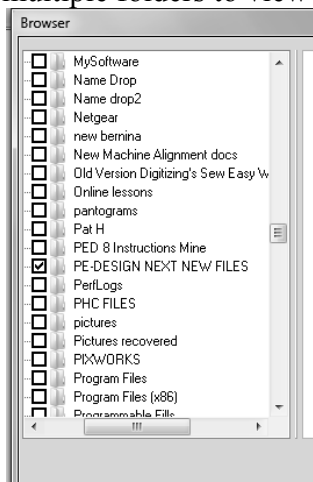


- You may also merge multiple designs into the window.

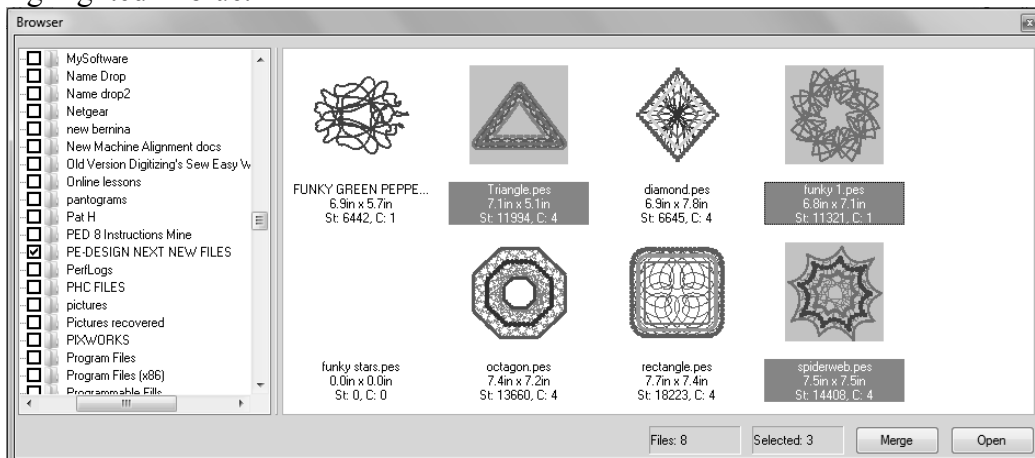
- Click New Page  on the Quick Access toolbar.
- Click on the B in the circle  and from the menu that appears, choose Browser.



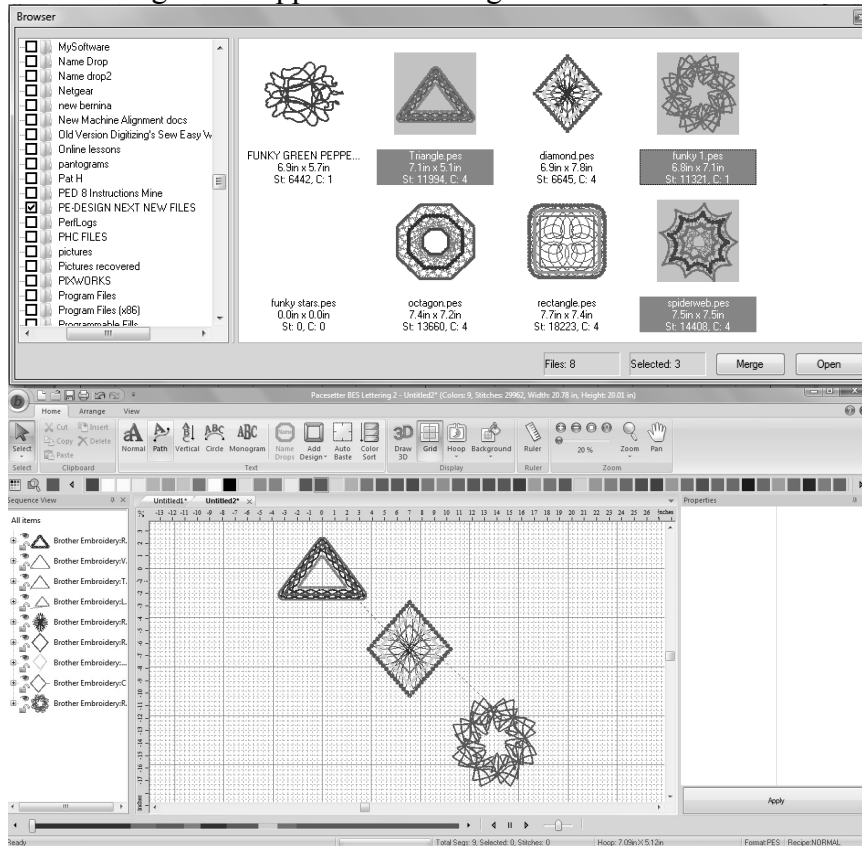
- On the left side of the window, click inside the square in front of folder to place a checkmark inside the square. This allows you to view the designs inside the folder. You may select multiple folders to view if you wish.



- To merge multiple designs, click on the 1<sup>st</sup> design to merge, hold down the control key on the keyboard and select the other designs you wish to merge. The selected designs will be highlighted in blue.



12. Click Merge.
13. All the designs will appear in the design window.



14. If you wish to open the design files instead of choosing Merge, choose Open. Each of the designs will open its own tab.

