

Setting Program Defaults

In the BES Lettering program, you have the ability to set personalized Program Defaults for the Recipe, Unit of Measurement, Machine Format and Grid Style you prefer. The following lesson will walk you through setting up your personalized Program defaults.

1. Open BES Lettering.

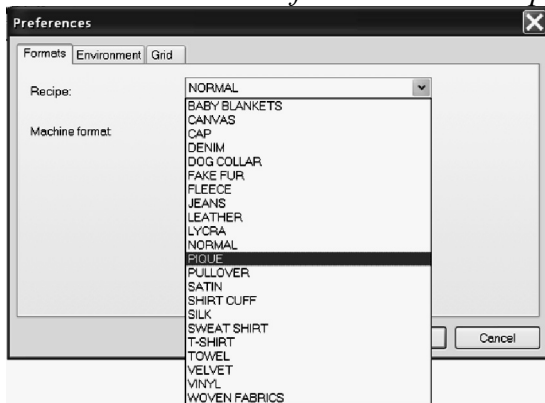
2. Click on the View Tab



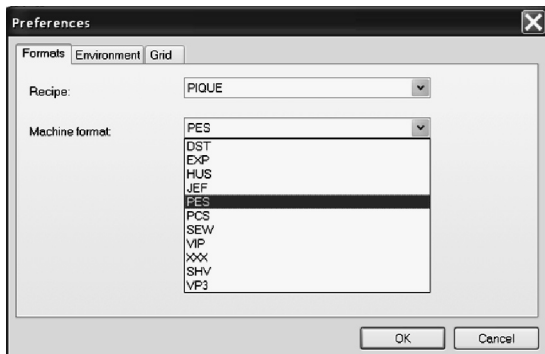
3. Click on Preferences



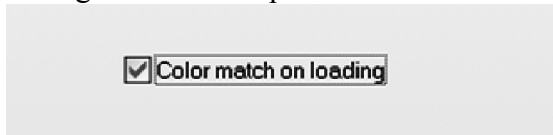
4. If you wish to use a specific style fabric as your default (i.e. pique) choose it from the recipe pull down menu. *Note: Setting the default recipe will make that recipe load each time the program is started or New Page is selected. If you want a different recipe, you will need to select one from the New Recipe menu.*



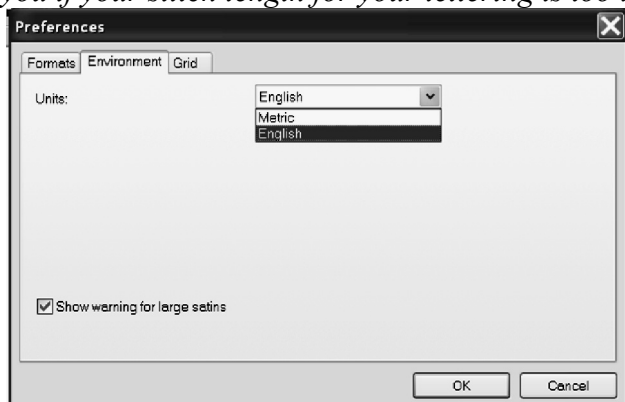
5. You can also set the default machine setting on this screen so you don't have to change it each time you use the program.
6. Click on the arrow next to Machine format and choose the format for your embroidery machine.



7. I have a checkmark in front of Color matching on loading. This will change the colors of a design to the color palette selected when a design is opened.

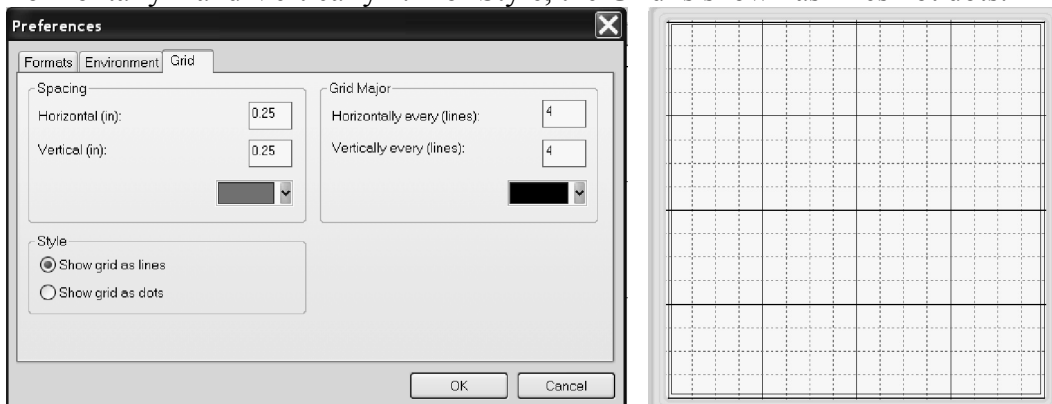


8. If you click on the Environment tab, you can change the default unit of measurement from Metric to English (inches). *Note: It is also a good idea to place a checkmark in front of Show warning for large satins by clicking on the box. In theory this should warn you if your stitch length for your lettering is too long.*



9. If you click on the Grid tab, you can set up the grid increments.
10. Horizontal and Vertical spacing can be manually entered in the Spacing area. For example if you want your grid lines to be 1/4 inch apart, you would type in Horizontal 0.25 and Vertical 0.25 and click OK. Your grid lines will be 1/4 inch apart. You can choose how frequently you want bold lines in the Grid Major area. If you want to have the software show you inches easily, after you have set your grid to 1/4 inch, you can set the Grid Major to Horizontal 4 and Vertically 4 as well. This will give you an easy reference for size, each bold line would represent 1 inch. You can choose Lines or Dots for your grid in the Style area by selecting the appropriate dot.

In the grid below, the Spacing for grid lines is 0.25 in x 0.25 in; the Grid Major is Horizontally 4 and Vertically 4. For Style, the Grid is shown as lines not dots.



11. Click OK to save your customized program settings. These will remain in effect until you change them or override the recipe by choosing a new one from the New Recipe menu.